



EarthShare
TEXAS

Earth Month Offerings





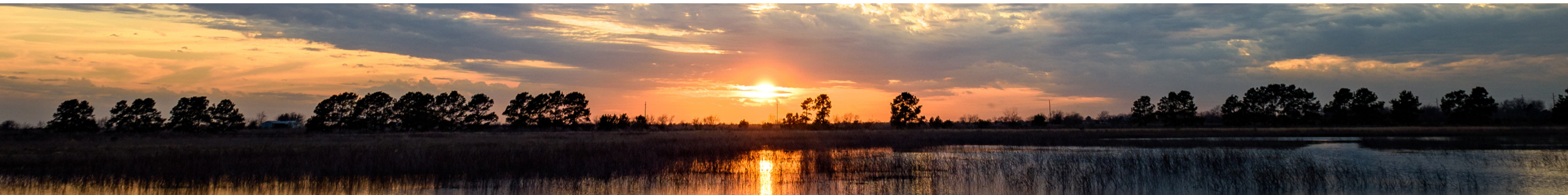
EarthShare Texas
is a federation of
**Texas-based
environmental and
conservation
nonprofits.**

Mission

Through collaborative fundraising and partnership building, EarthShare Texas empowers mission-driven members to pursue positive environmental and health impacts across the Lone Star State for the benefit of all.

Vision

A collaborative alliance of environmental organizations, public institutions, and businesses conserving and sustaining a healthy environment for all Texans.



Why EarthShare Texas?



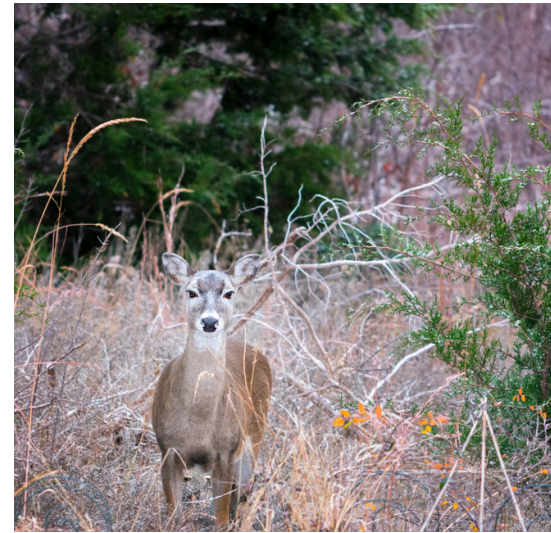
Texan, Born & Raised

Est. 1992, we are a collective of and support Texas environmental organizations with local, community-informed solutions.



Established Infrastructure

EarthShare Texas has the experience and capacity to absorb large donations and distribute funds for maximum impact across the state.



Trusted Network

Member organizations are vetted annually by ESTX staff to ensure your contribution is used for lasting change.



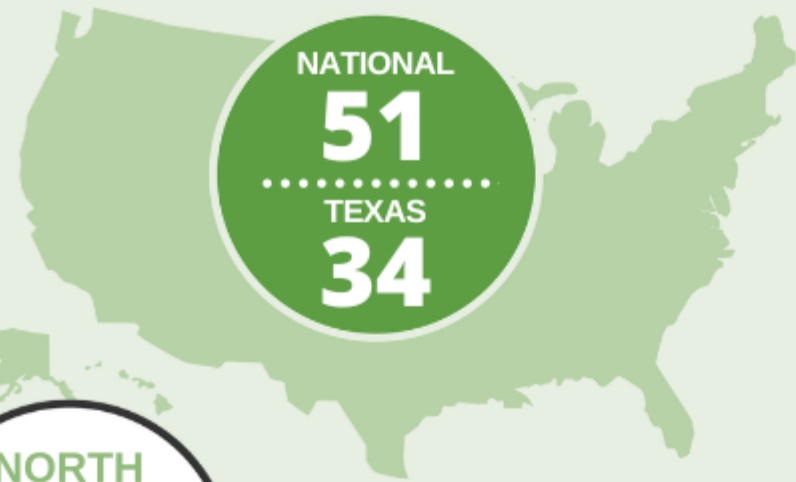
Collective Power

By donating to our federation, you empower members to focus on local impact, while collectively pursuing a better environment for all Texans.



Tax Deductible

Contributions are tax-deductible to the fullest extent allowed by law.



STATEWIDE

CENTRAL TEXAS

UPPER GULF COAST

NORTH TEXAS

SOUTH TEXAS

WEST TEXAS

Our Unique Value

Proven track record: We've worked with Texas businesses in employee engagement since 1992, starting with our workplace giving campaigns.

Diverse Impact: working with more than 30 nonprofits across the state, active in areas such as: conservation, environmental education, reforestation, renewable energy, etc.

Vetted Network: ESTX nonprofits are vetted for mission alignment, efficiency and efficacy, and nonprofit operational standards.

How we support your business

Connect your employees to impactful nonprofits in your community.

Measurable impact statistics that align with your sustainability goals.

We're an extension of your team, sharing insight, comms templates, and reporting.

Support in telling your story, including media kits, testimonials, and other materials.

Employees expect more.

In our hyper-competitive job market, employers must address employee preferences.

93%

of corporate employees under 30 agree that the more socially and environmentally responsible their companies become, the more motivated and loyal they will be.

89%

of millennials expect employers to provide hands-on activities around environmental responsibilities in the workplace (vs. 77% U.S. average).

83%

of millennials want their company to provide support and resources for them to make positive social and environmental changes at home (vs. 70% U.S. average).

Join the Green Business Community



FUTABA

BAE SYSTEMS



TOKIO MARINE
HCC



**Our Texas
Our Future**



VERICAST

Earth Month Offerings

Volunteering

.....

ESTX coordinates a volunteer event with one or multiple nonprofit partners. Feels good after a day getting dirty!

The Sustainability Challenge

.....

Our platform, EarthShare Engage, enables employees to form teams and compete to be the greenest team.

Impact Reporting

.....

ESTX creates a custom impact report for your volunteer event and the sustainability challenge.

Learning & Networking

.....

All employees can join for a special virtual green learning topic, or join us for the Eco Enthusiasts Social Hour.

Volunteer Event

ESTX matches your company with a nonprofit near you. Includes admission to the “Mission Reveal” Event and a shout out on our website.

Projects that need YOU

Park cleanup, oyster reef restoration, marsh grass planting, tree planting, park building, trail maintenance, invasive species removal, and other outdoor activities.



Mission Reveal

Event

The fun kicks off with this educational, virtual event to introduce companies to their nonprofit volunteer match and other participating nonprofits through an interactive game. Teams then meet with their project match to learn more about their mission and the impact they'll be making during Earth Month.

Earth Month Offerings

Volunteering

.....

ESTX coordinates a volunteer event with one or multiple nonprofit partners. Feels good after a day getting dirty!

The Sustainability Challenge

.....

Our platform, EarthShare Engage, enables employees to form teams and compete to be the greenest team.

Impact Reporting

.....

ESTX creates a custom impact report for your volunteer event and the sustainability challenge.

Learning & Networking

.....

All employees can join for a special virtual green learning topic, or join us for the Eco Enthusiasts Social Hour.



Brighten Your Workplace with Sustainability Challenges

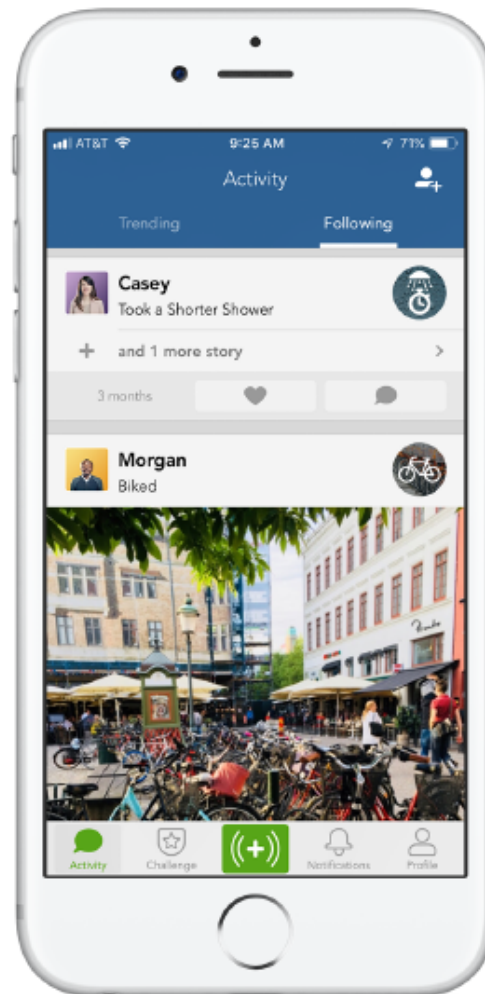
The EarthShare Engage App helps people make choices that are better for the environment.

Encourage your team to improve themselves, their community, and the planet!



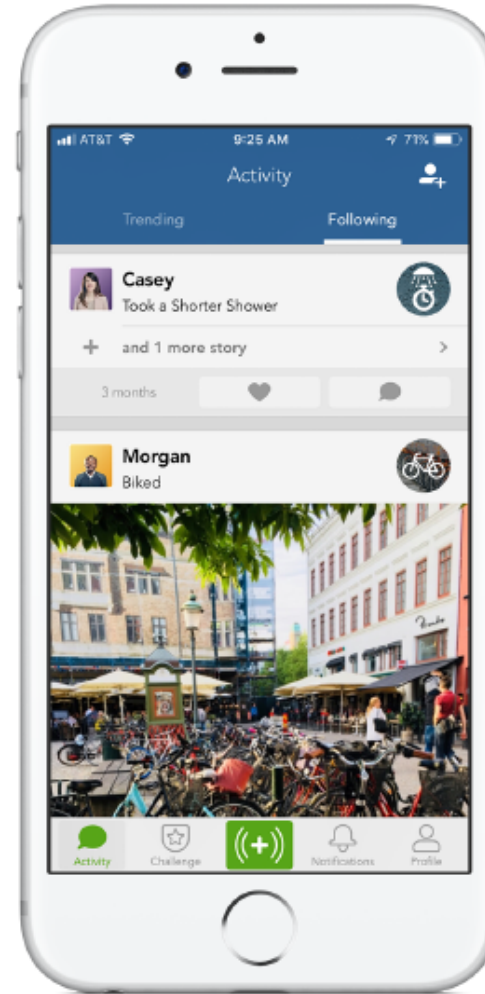
How It Works

Actions



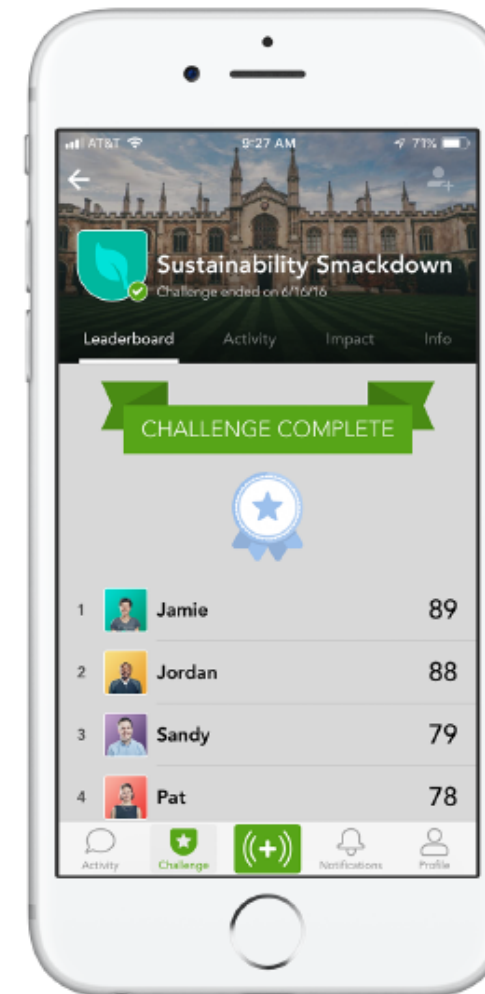
Dozens of opportunities to make sustainable choices throughout the day.

Social



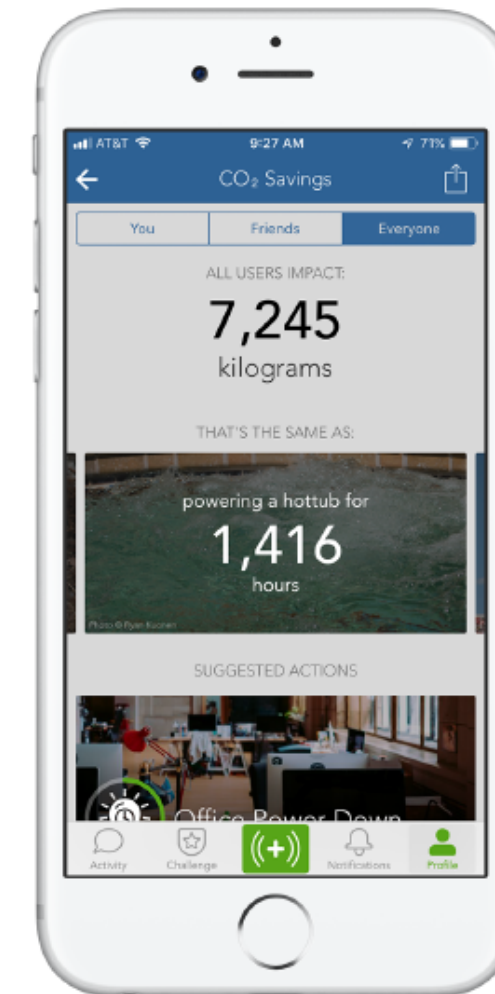
Share your Actions and find inspiration from others.

Challenges



Compete to rack up points on the leaderboard.

Real Impact



See the positive effect your habits have had on the planet.

Earth Month Offerings

Volunteering

.....

ESTX coordinates a volunteer event with one or multiple nonprofit partners. Feels good after a day getting dirty!

The Sustainability Challenge

.....

Our platform, EarthShare Engage, enables employees to form teams and compete to be the greenest team.

Impact Reporting

.....

ESTX creates a custom impact report for your volunteer event and the sustainability challenge.

Learning & Networking

.....

All employees can join for a special virtual green learning topic, or join us for the Eco Enthusiasts Social Hour.

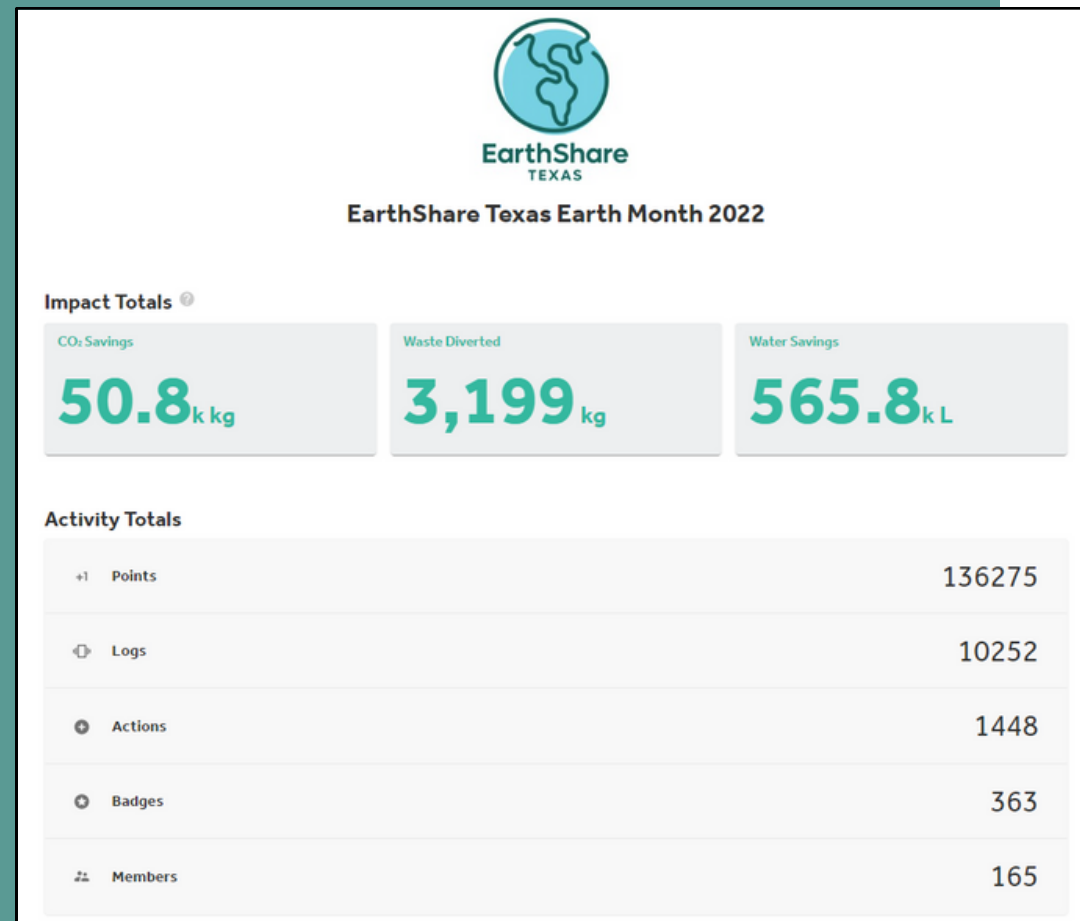
Gain insight with Impact Reporting

The Sustainability Challenge

As your team competes, our platform collects data for water conservation, waste diverted, and CO2 emissions metrics.

Custom Reporting

Our team collects impact data for your volunteer event, including trees planted, trash removed, or other metrics relevant to your event.



Top Users			Top Actions		View All >
1	Michael M.	9,183	1	Water Off While Brushing	664
2	Nick	7,688	2	Reusable Water Bottle	631
3	Pooja Lala	7,123	3	Turn Off the Lights	514
4	Paris	6,725	4	Recycle	414
5	Erik	5,931	5	Shorter Showers	368

Earth Month Offerings

Volunteering

.....

ESTX coordinates a volunteer event with one or multiple nonprofit partners. Feels good after a day getting dirty!

The Sustainability Challenge

.....

Our platform, EarthShare Engage, enables employees to form teams and compete to be the greenest team.

Impact Reporting

.....

ESTX creates a custom impact report for your volunteer event and the sustainability challenge.

Learning & Networking

.....

All employees can join for a special virtual green learning topic, or join us for the Eco Enthusiasts Social Hour.

Environmental L&D in the Office

Host an ESTX nonprofit virtually. Our member nonprofit staff are the experts, and they can share environmental science learning, fun DIY home projects, and more information on how employees can get involved in their community.



Green Community

Social Hour

Your employees can join us in Austin or Houston for a mixer to meet other eco-enthusiast professionals in your field and in your community.

Program

Pricing



Register as a Participant



Volunteer Package \$1,500

Program benefits:

- Volunteer activity up to 30 participants
- Impact report for volunteer event
- Admission to Mission Reveal

Marketing benefits:

- Logo on landing page, logo on mission reveal



Sustainability Challenge \$500

Program benefits:

- Admission to the Texas Sustainability Challenge
- Impact report for challenge

Marketing benefits:

- Logo on landing page

Register as a Sponsor

Enjoy additional visibility for your employee and community engagement programs.

Collective reach of over 3 million viewers.
Average 1000 monthly visitors to our website.



Title \$7,500

Program benefits:

- Admission to the sustainability challenge
- Impact reporting available
- 10 tickets to the sustainability meetup
- Admission to the virtual L&D event
- Volunteer activity up to 50 participants



Air \$5,000

Program benefits:

- Admission to the Sustainability Challenge
- Impact reporting available
- 5 tickets to the sustainability meetup
- Admission to the virtual L&D event
- Volunteer activity up to 30 participants



Land \$2,500

Program benefits:

- Volunteer activity up to 30 participants
- Admission to the sustainability challenge
- Impact reporting available
- 5 tickets to the sustainability meetup

Marketing Benefits

Title Sponsor of the Green Social Hour

Logo on digital recognition, landing page, recognition at volunteer event, and mission reveal event

Featured in paid advertising/press

Logo on digital recognition, landing page, recognition at volunteer event, mission reveal logo

Logo on digital recognition, landing page, and on mission reveal



Thank you!

Contact us with any questions

Website earthshare-texas.org

**Phone
Number** 512-472-5518

**Email
Address** estx@earthshare-texas.org